

# INSTALL HI9200

## Downloading Driver for HI9200

<http://software.hannainst.com/>



Below are the current versions of PC compatible software for our products. If you have any questions or problems then please e-mail us at [tech@hannainst.com](mailto:tech@hannainst.com) or contact your local Hanna Sales office for assistance.

### Software Version and Compatibility Chart

Show: 25 entries Search: 9200

Product Code	Description	Version	O.S. Requirements	File Download
HI92000	Portable and Benchtop Meters	5.0.38	Windows® 10 & below	<a href="#">Download Now</a>

Showing 1 to 1 of 1 entries (filtered from 11 total entries)

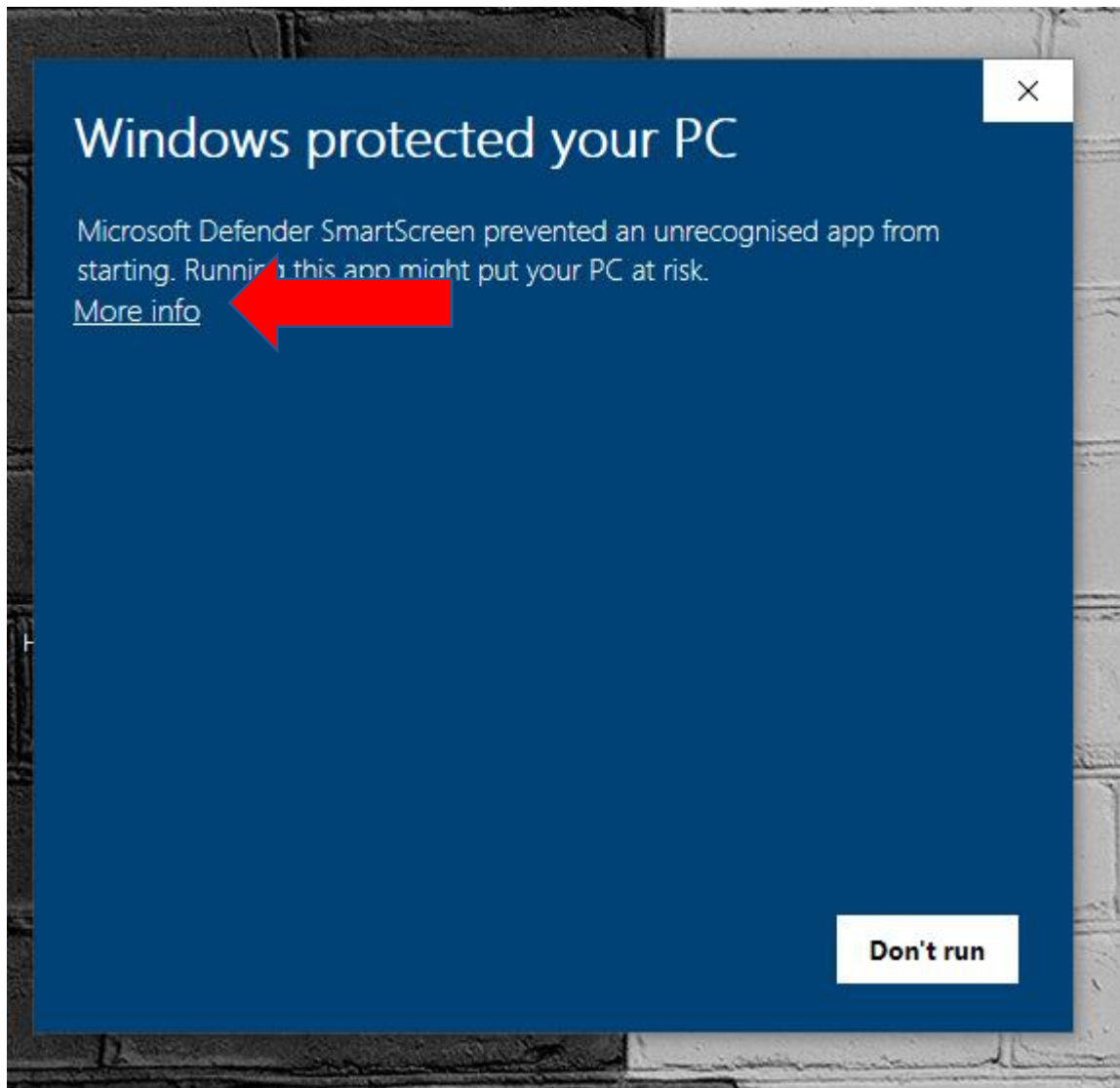
Previous 1 Next

After installation go back to <http://software.hannainst.com/> and download the **USB Driver**

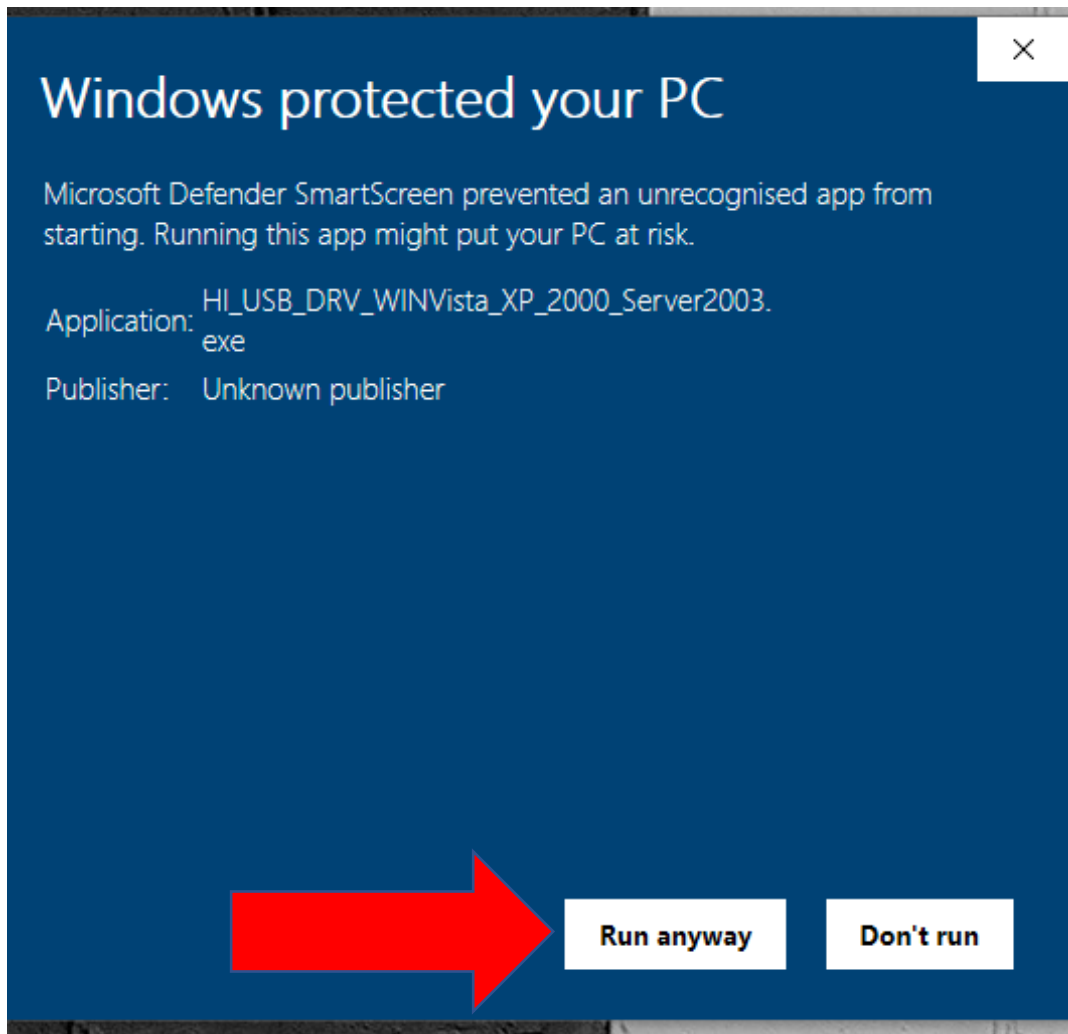
HI929829	HI9829 Multiparameter Meters	1.0.16	Windows® 10 & below	<a href="#">Download Now</a>
	USB Driver		USB driver for Windows 98, Me, NT	<a href="#">Download Now</a>
	USB Driver		USB driver for Windows Vista, XP, 2000, Server 2003	<a href="#">Download Now</a>

Install the **USB Driver**

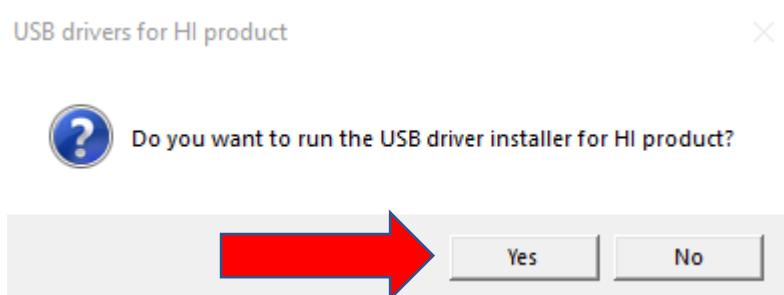
Click More Info



Click **Run anyway**



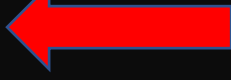
Click **Yes** to intall **USB driver**



After installation press **ENTER**.

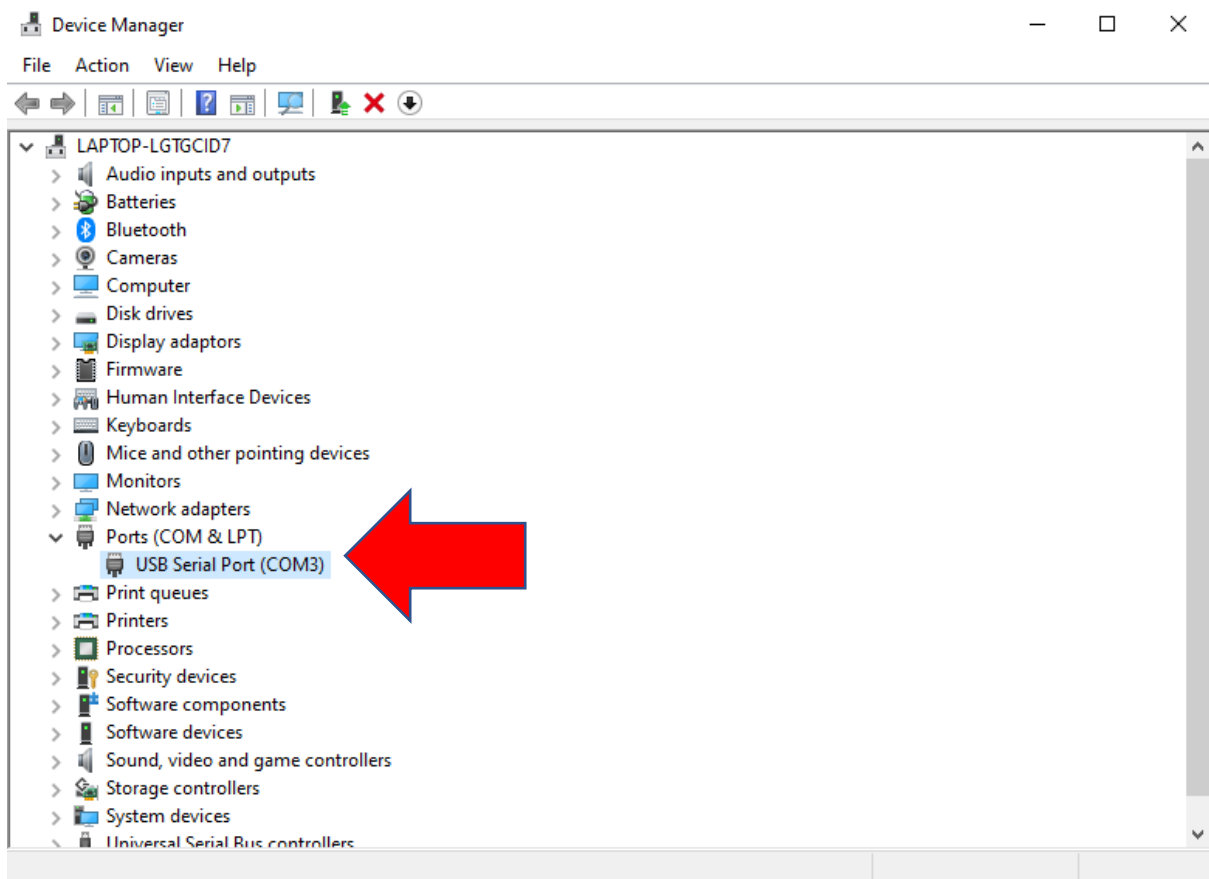
```
C:\Users\ATTILA~1\AppData\Local\Temp\ckz_88PQ\DPInst_Monx64.exe
64-bit OS detected
"C:\Users\ATTILA~1\AppData\Local\Temp\ckz_88PQ\DPInstx64.exe"
Installing driver...

FTDI CDM Driver Installation process completed.
Press enter.
```

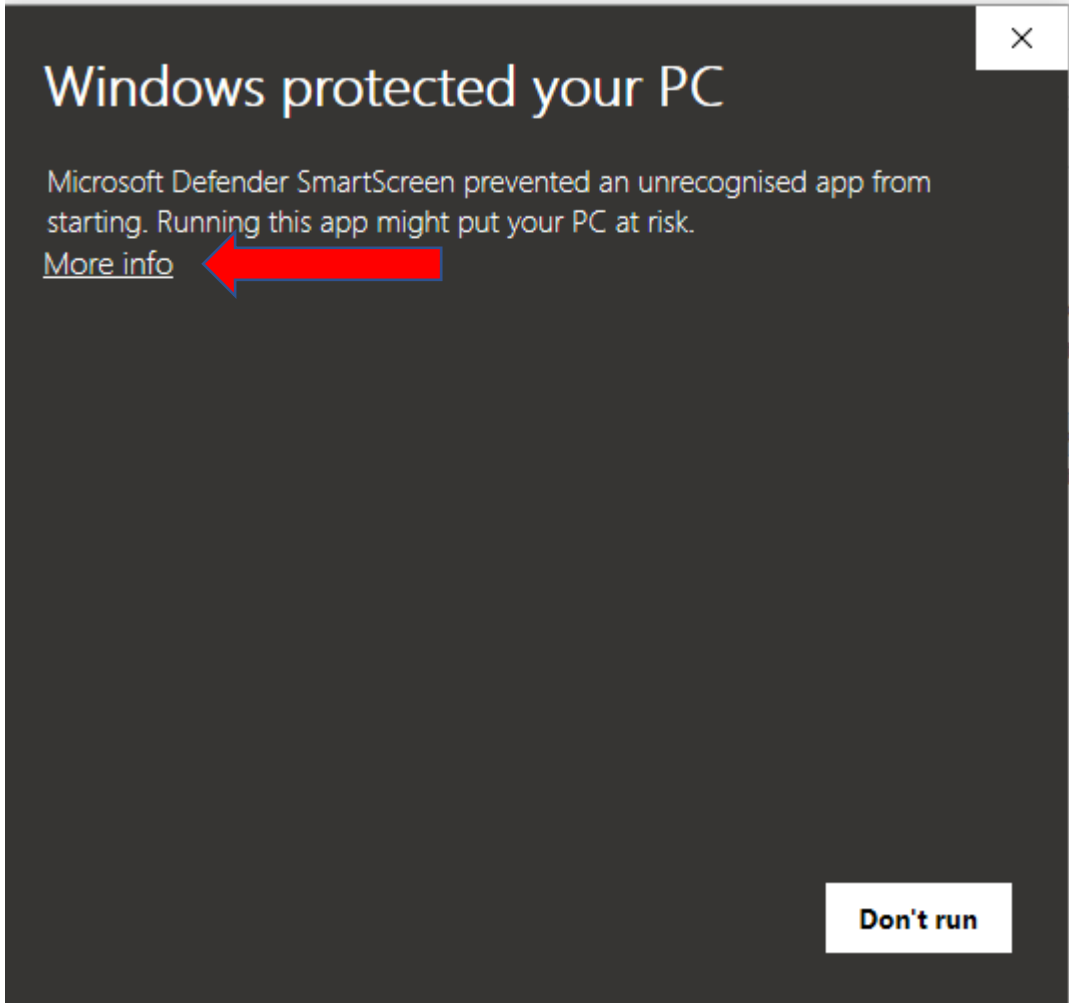


Now connect the **HI 900900**

To check the **COM PORT** Go in **Device Manager**



Install **HI800 PC app**



Click **Run anyway**

# Windows protected your PC



Microsoft Defender SmartScreen prevented an unrecognized app from starting. Running this app might put your PC at risk.

Application: [REDACTED].setup.exe

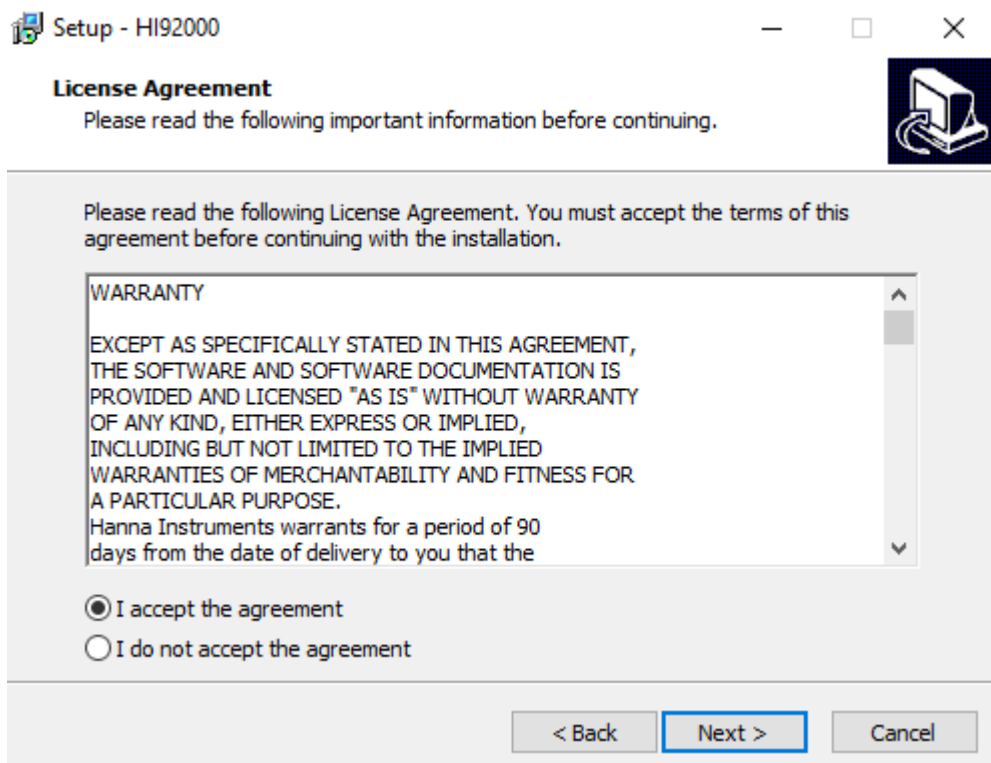
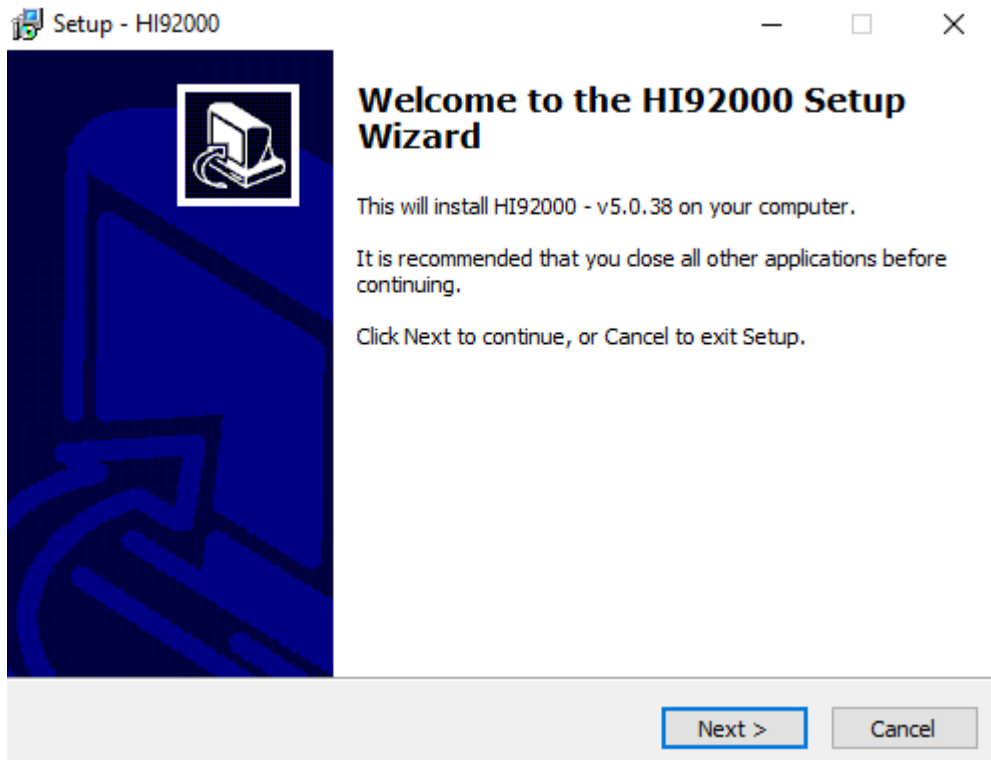
Publisher: Unknown publisher



Run anyway

Don't run

Install the **App**



Setup - HI92000



### Select Destination Location

Where should HI92000 be installed?



Setup will install HI92000 into the following folder.

To continue, click Next. If you would like to select a different folder, click Browse.

C:\Hanna\HI92000

Browse...

At least 32.9 MB of free disk space is required.

< Back

Next >

Cancel

Setup - HI92000



### Select Start Menu Folder

Where should Setup place the program's shortcuts?



Setup will create the program's shortcuts in the following Start Menu folder.

To continue, click Next. If you would like to select a different folder, click Browse.

HI92000

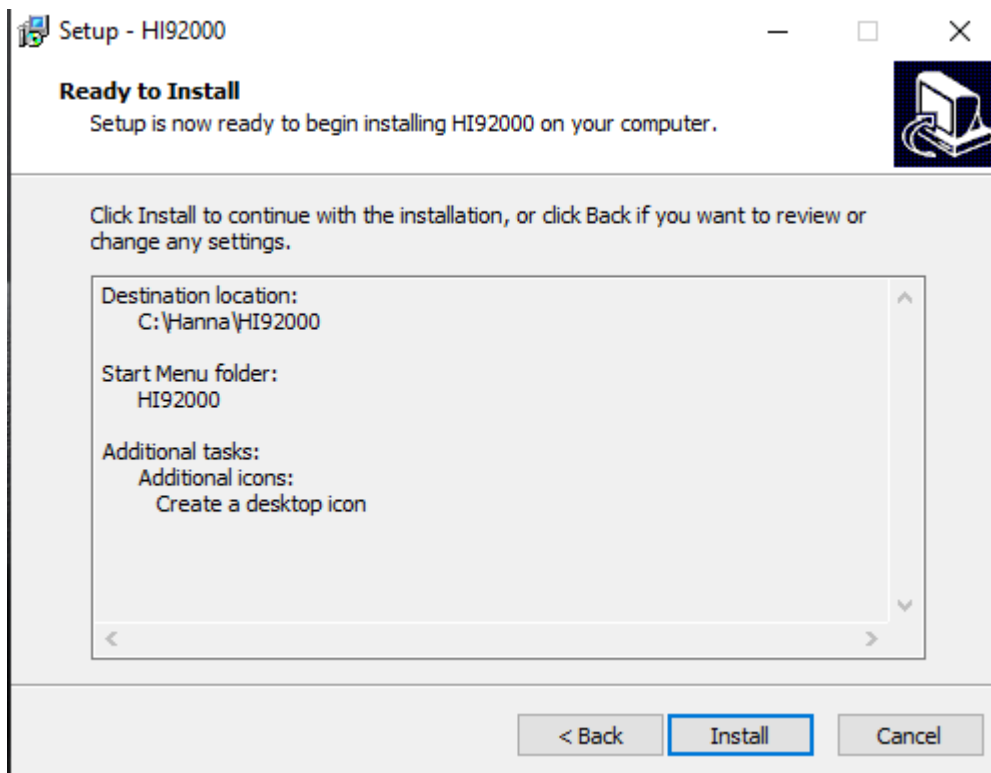
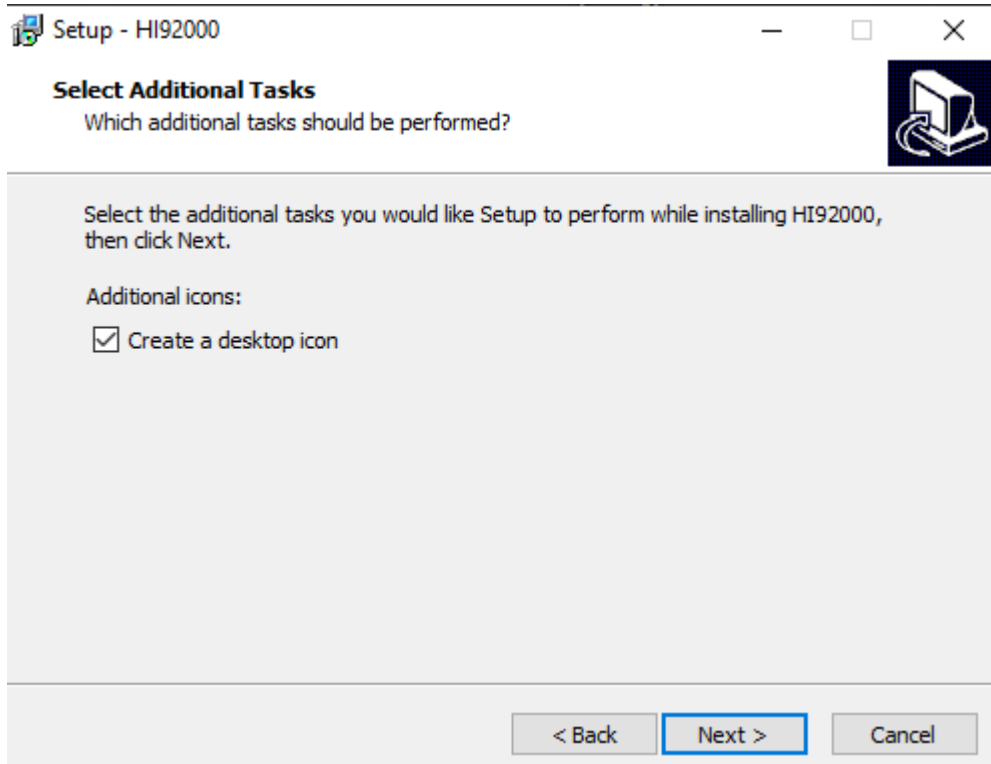
Browse...

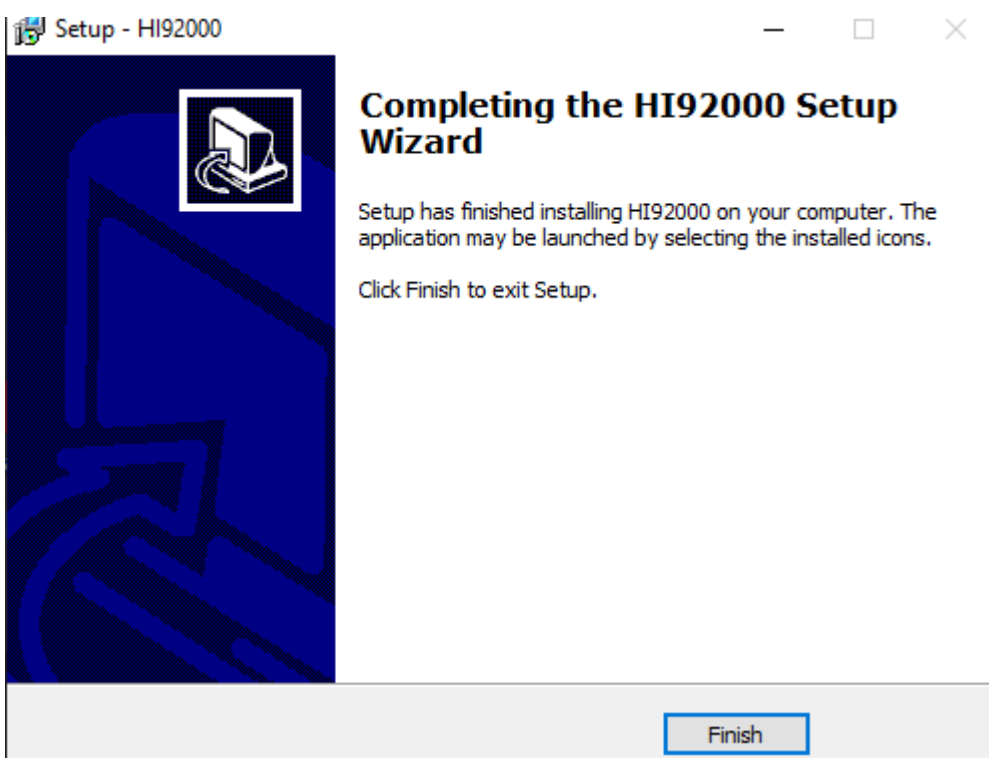
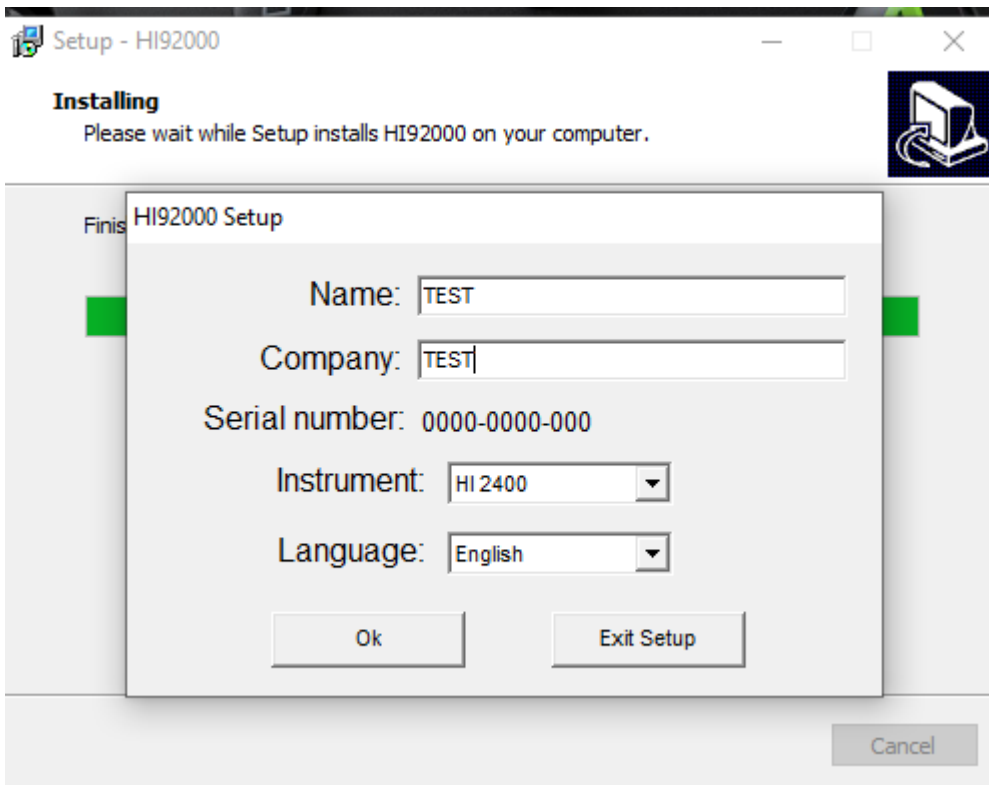
< Back

Next >

Cancel







Set the communication port to 9600

The screenshot displays the HI 92000 software interface. At the top, there is a menu bar with options: Settings, Connect, Auto Log, Log Sample, and Exit. Below the menu bar is a data table with columns: Date, Time, ppm, %, °C, and Remarks. The table rows are numbered 1 through 49. A dialog box titled "HI92000 - Real-Time Logging settings" is open in the foreground. The dialog box contains the following sections:

- Auto Log:** Sample delay (10 sec), Max. samples (1000).
- Communication:** COM port (7), Detect Selected Instrument button, Baud rate (9600).
- LCD:** Delay (10 sec).
- User information:** Name (TEST), Company (TEST).
- Your Excel version:** Excel 4.0 (unselected), Other Excel versions (selected).

Buttons for "Ok" and "Cancel" are located at the bottom of the dialog box. The background software window also has a menu bar at the bottom with options: Open, Print, Save, Export, Clear, Plot, Help, and About.

Connect the meter



--- ppm      --- °C  
--- %

Settings    Connect     Log Sample    Exit

	Date	Time	ppm	%	°C	Remarks
1						
2						
3						
4						
5						
6						
7						
8						
9						
10						
11						
12						
13						
14						
15						
16						
17						
18						
19						
20						
21						
22						
23						
24						
25						
26						
27						
28						
29						
30						
31						
32						
33						
34						
35						
36						
37						
38						
39						
40						
41						
42						
43						
44						
45						
46						
47						
48						
49						

Open    Print    Save    Export    Clear    Plot    Help    About