

INSTALL HI800

Downloading Driver for HI800

<http://software.hannainst.com/>



Below are the current versions of PC compatible software for our products. If you have any questions or problems then please e-mail us at tech@hannainst.com or contact your local Hanna Sales office for assistance.

Software Version and Compatibility Chart

Show entries

Search:

Product Code	Description	Version	O.S. Requirements	File Download
HI800104	HI800 Fertilizer Controller	3.0.0	Windows® 10 & below	Download Now

Showing 1 to 1 of 1 entries (filtered from 11 total entries)

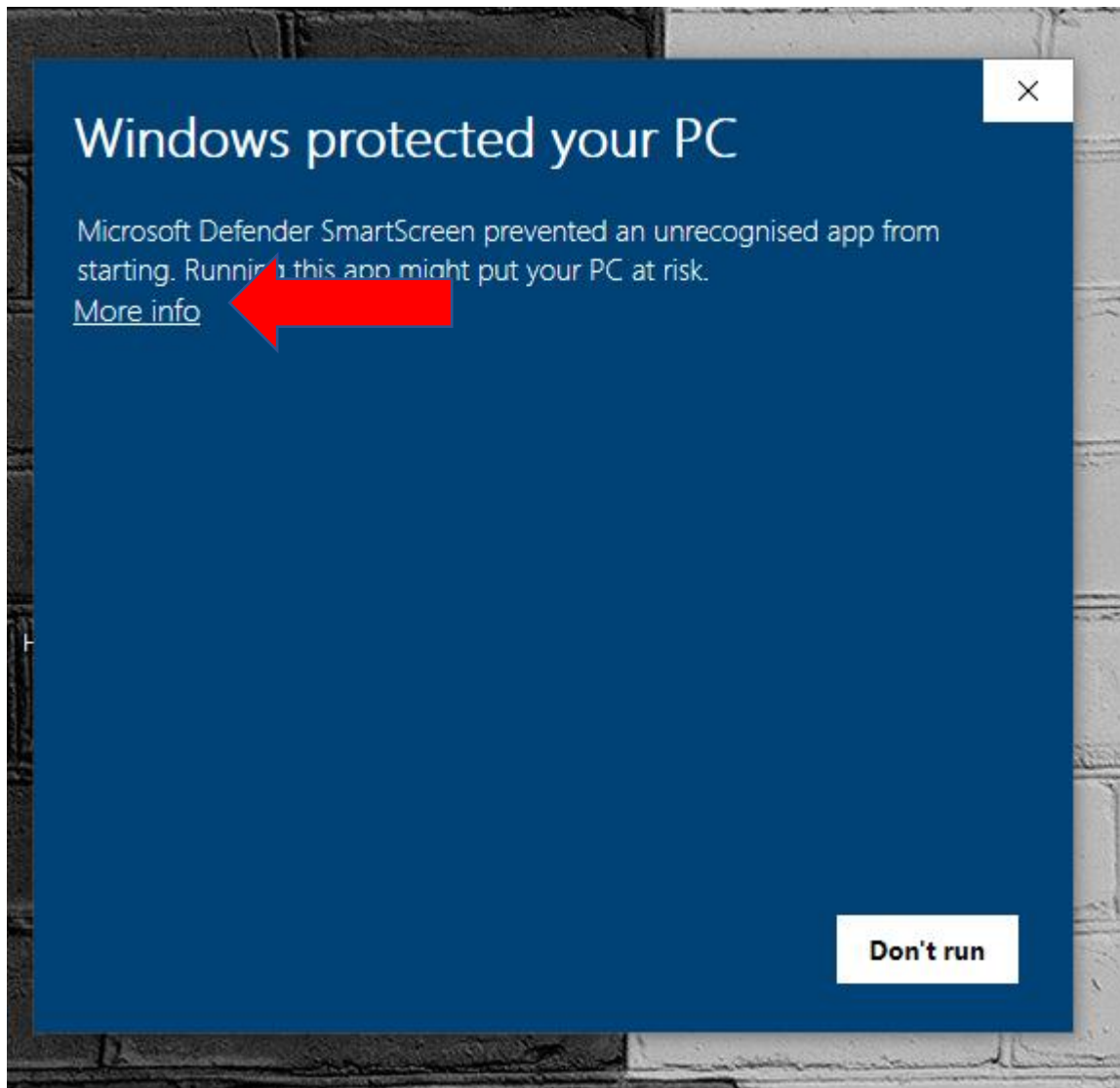
Previous **1** Next

After installation go back to <http://software.hannainst.com/> and download the **USB Driver**

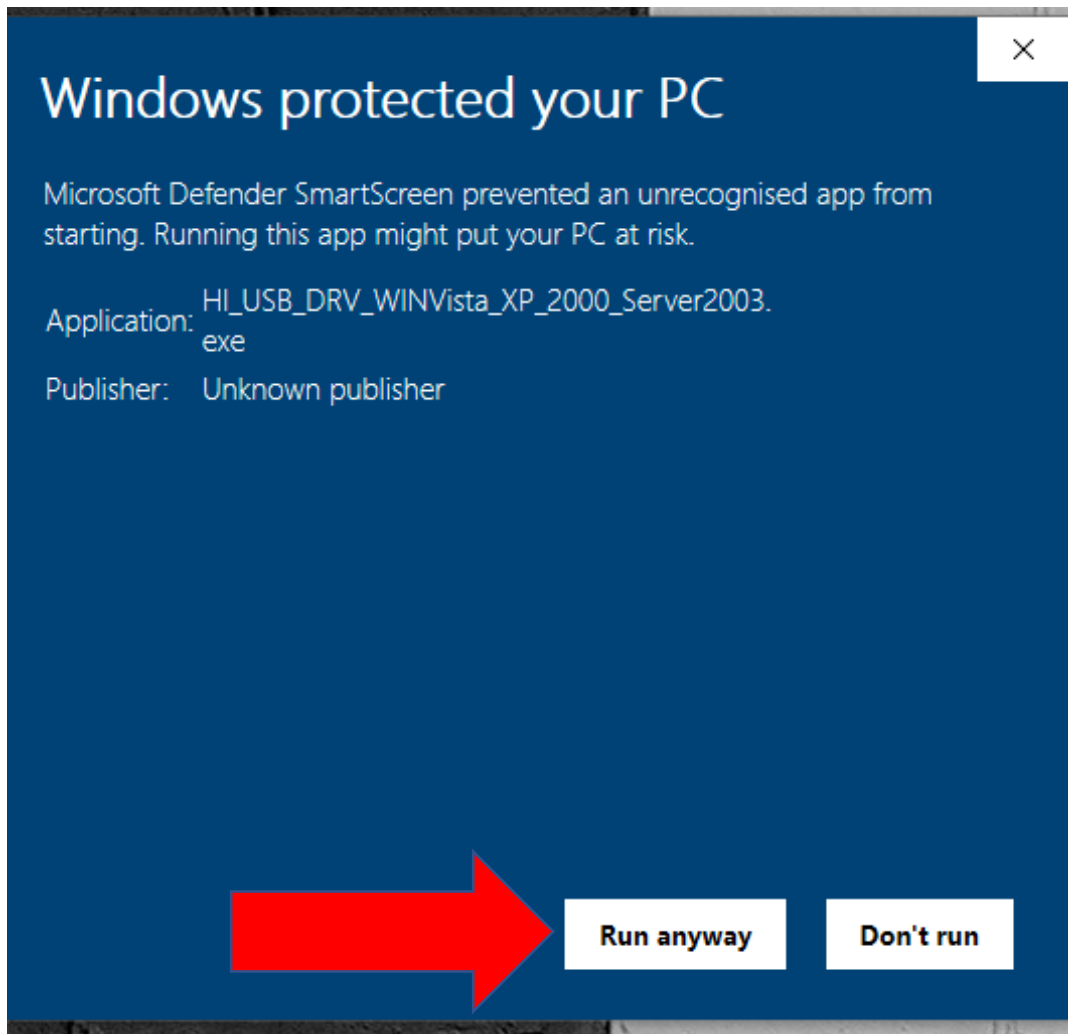
HI929829	HI9829 Multiparameter Meters	1.0.16	Windows® 10 & below	Download Now
	USB Driver		USB driver for Windows 98, Me, NT	Download Now
	USB Driver		USB driver for Windows Vista, XP, 2000, Server 2003	Download Now

Install the USB Driver

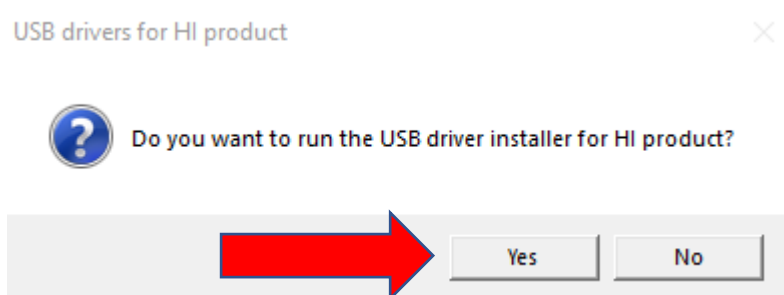
Click More Info



Click **Run anyway**



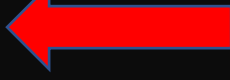
Click **Yes** to intall **USB driver**



After installation press **ENTER**.

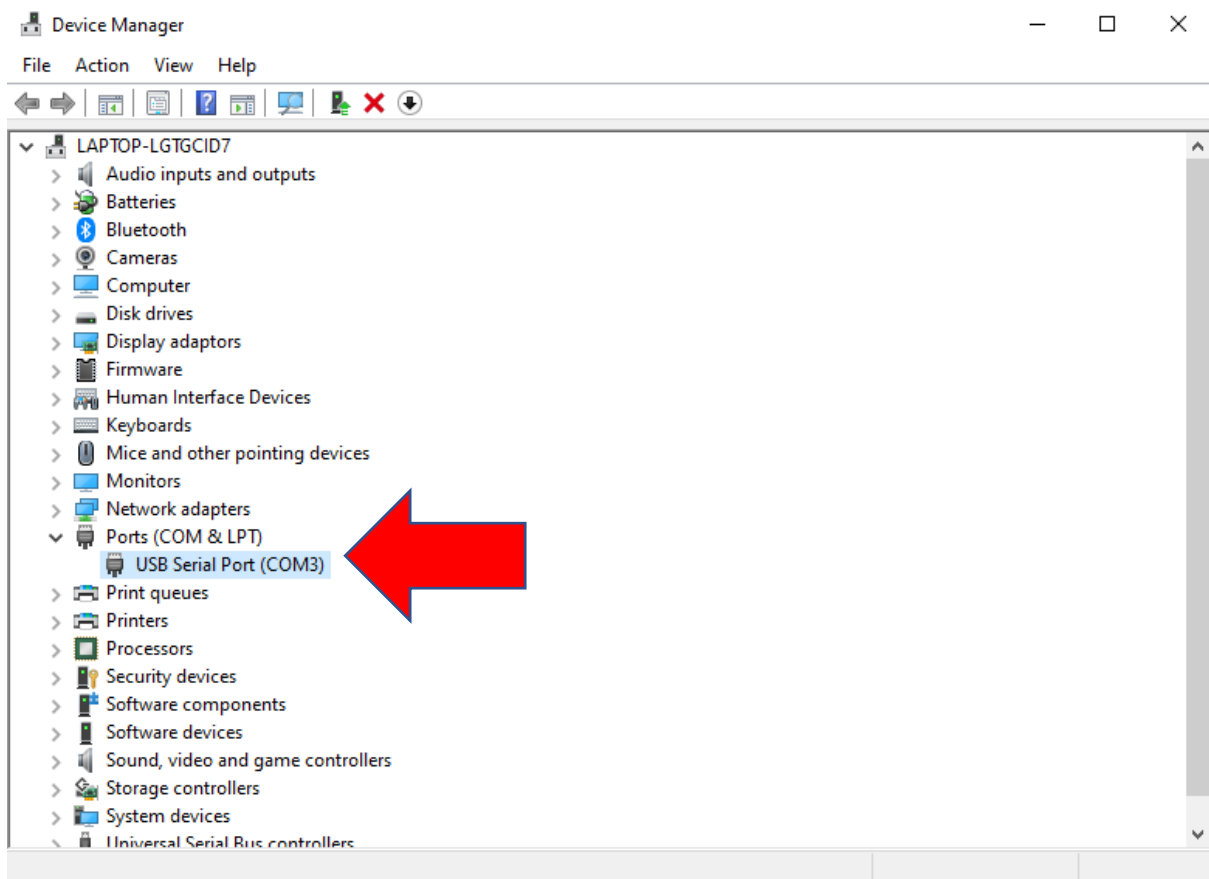
```
C:\Users\ATTILA~1\AppData\Local\Temp\ckz_88PQ\DPInst_Monx64.exe
64-bit OS detected
"C:\Users\ATTILA~1\AppData\Local\Temp\ckz_88PQ\DPInstx64.exe"
Installing driver...

FTDI CDM Driver Installation process completed.
Press enter.
```

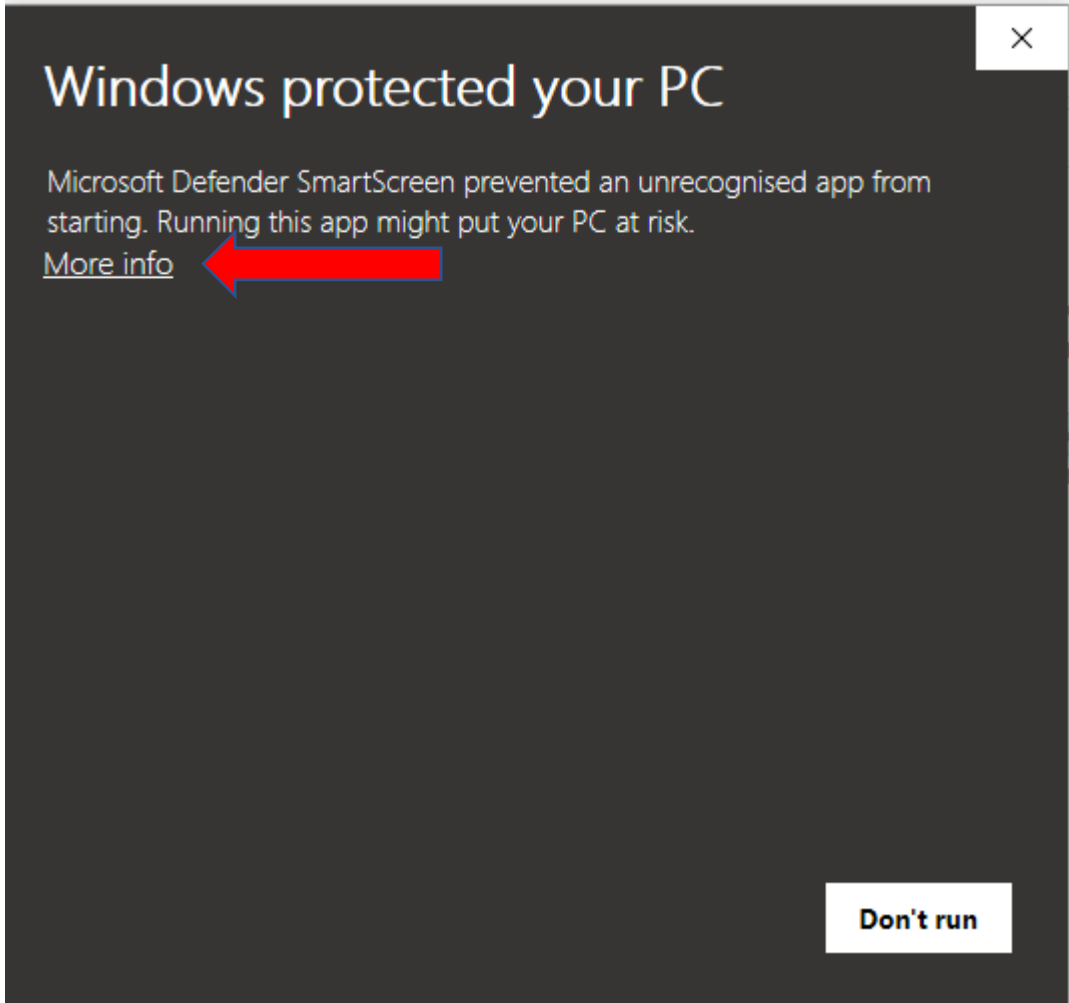


Now connect the **HI 900900**

To check the **COM PORT** Go in **Device Manager**



Install **HI800 PC app**



Click **Run anyway**

Windows protected your PC



Microsoft Defender SmartScreen prevented an unrecognized app from starting. Running this app might put your PC at risk.

Application: [REDACTED].setup.exe

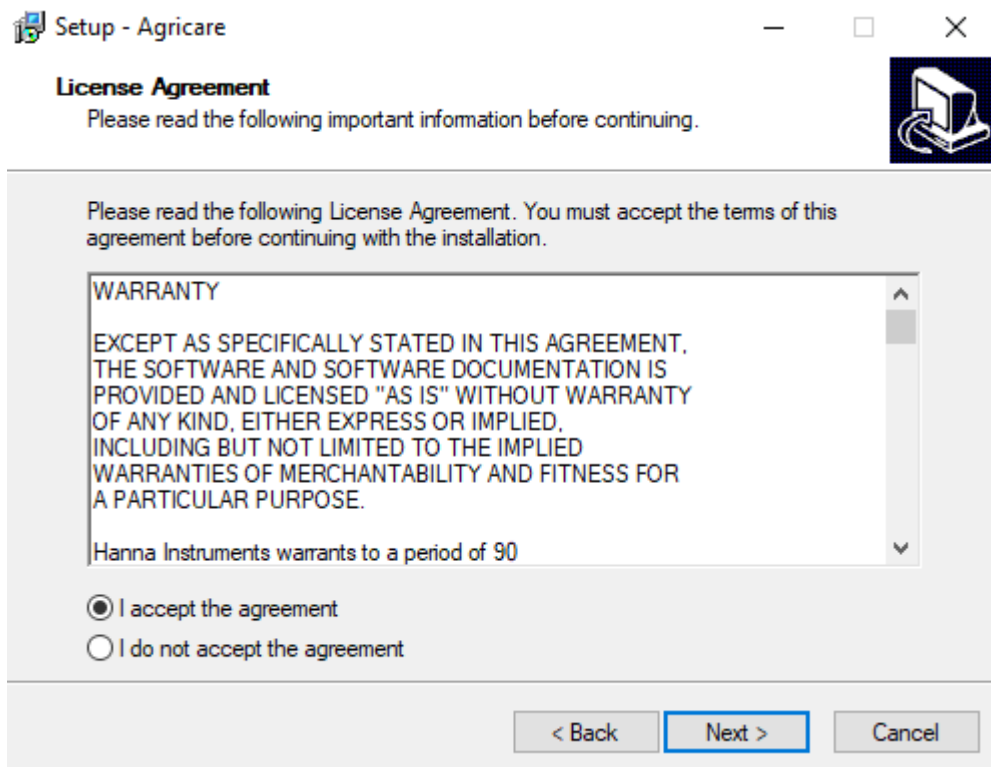
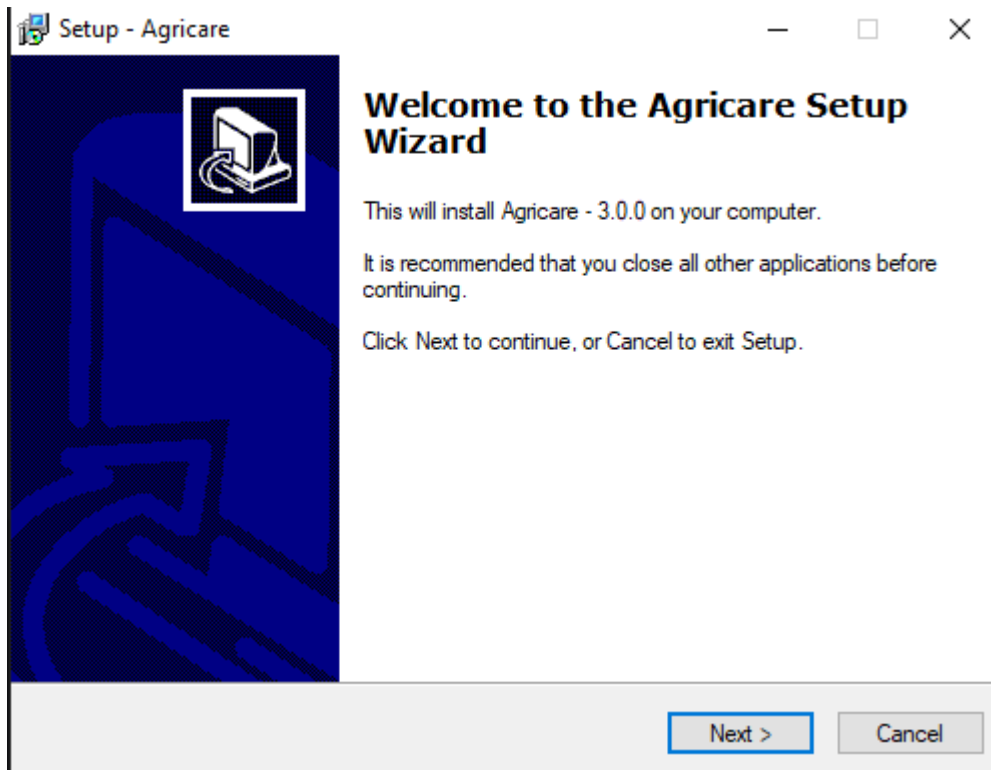
Publisher: Unknown publisher

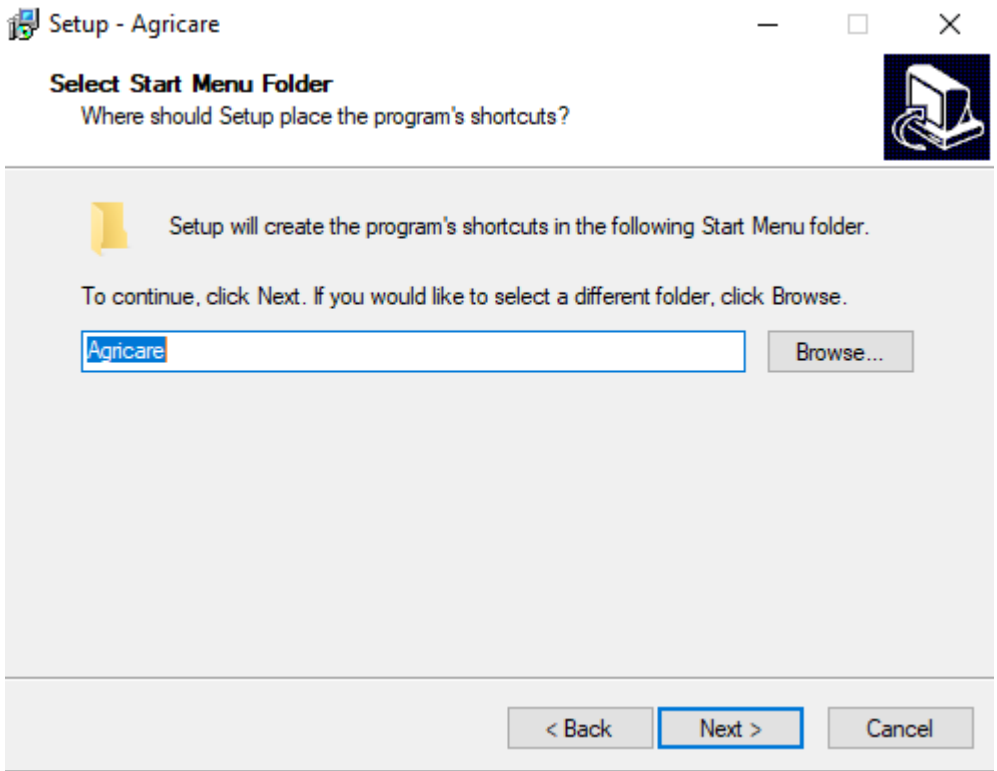
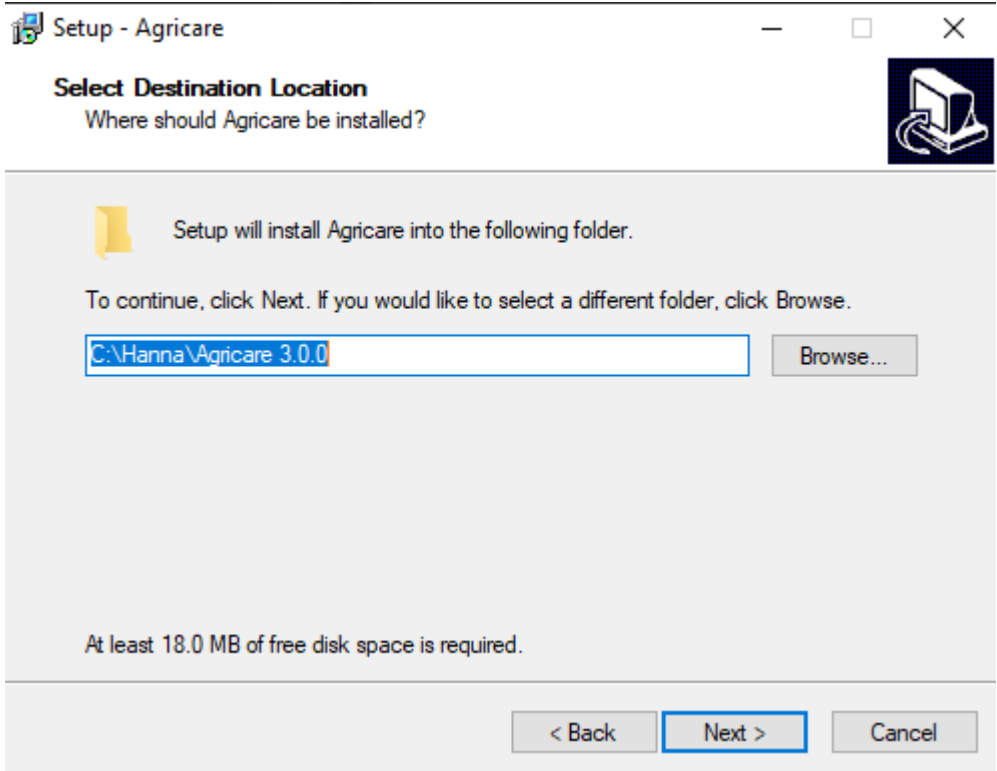


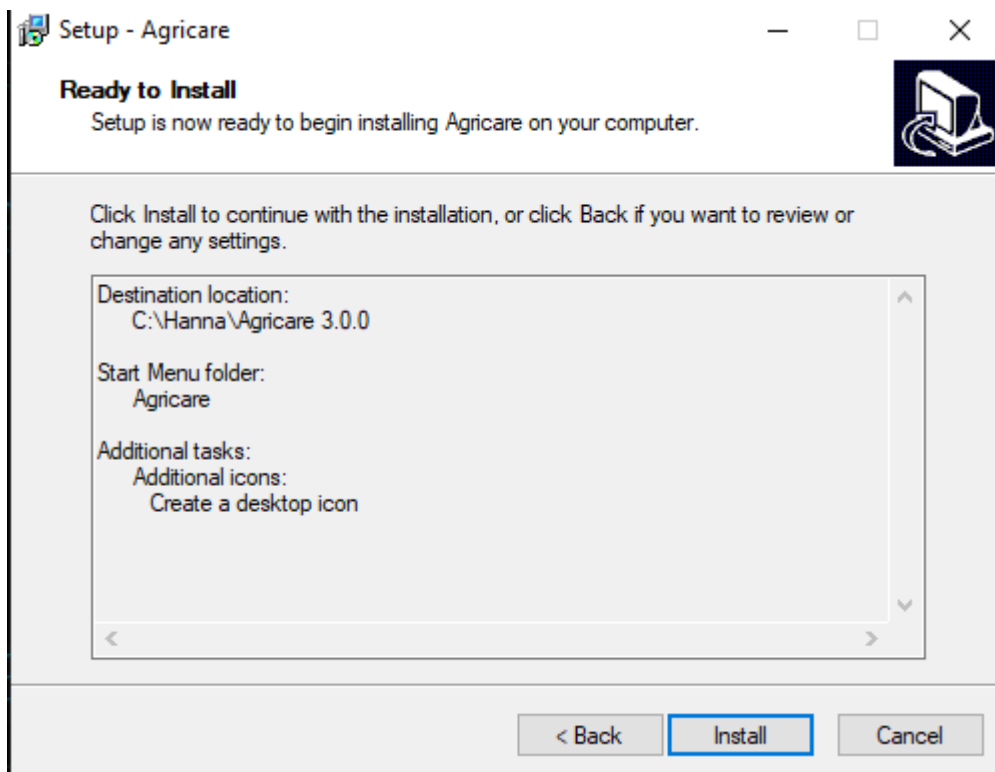
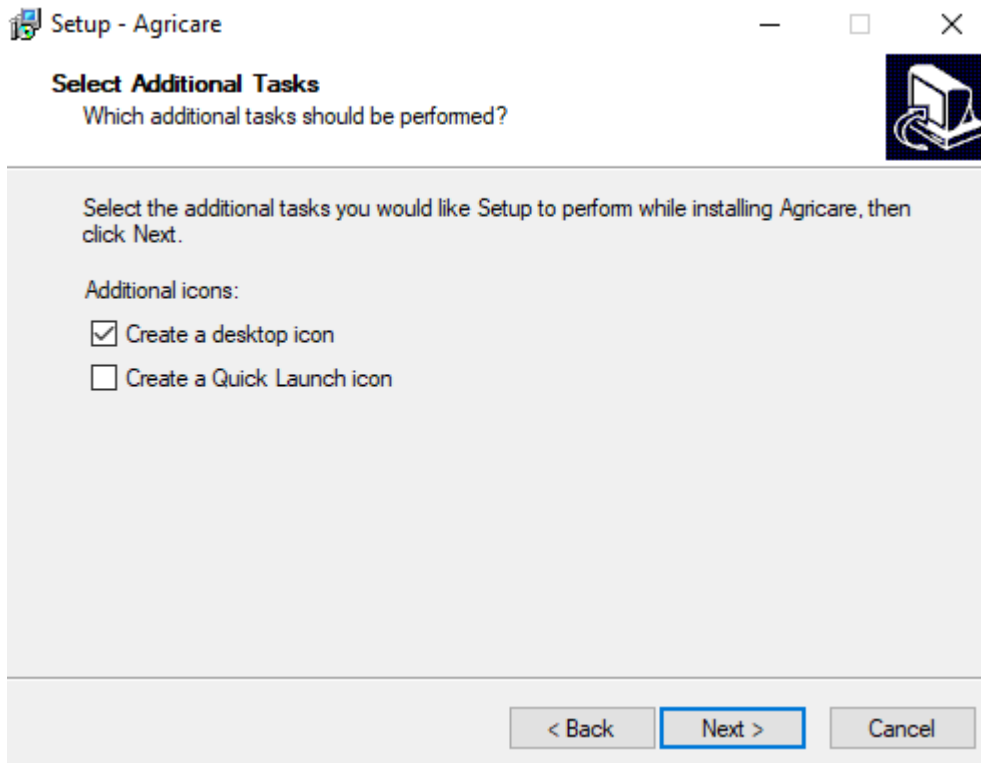
Run anyway

Don't run

Install the **App**







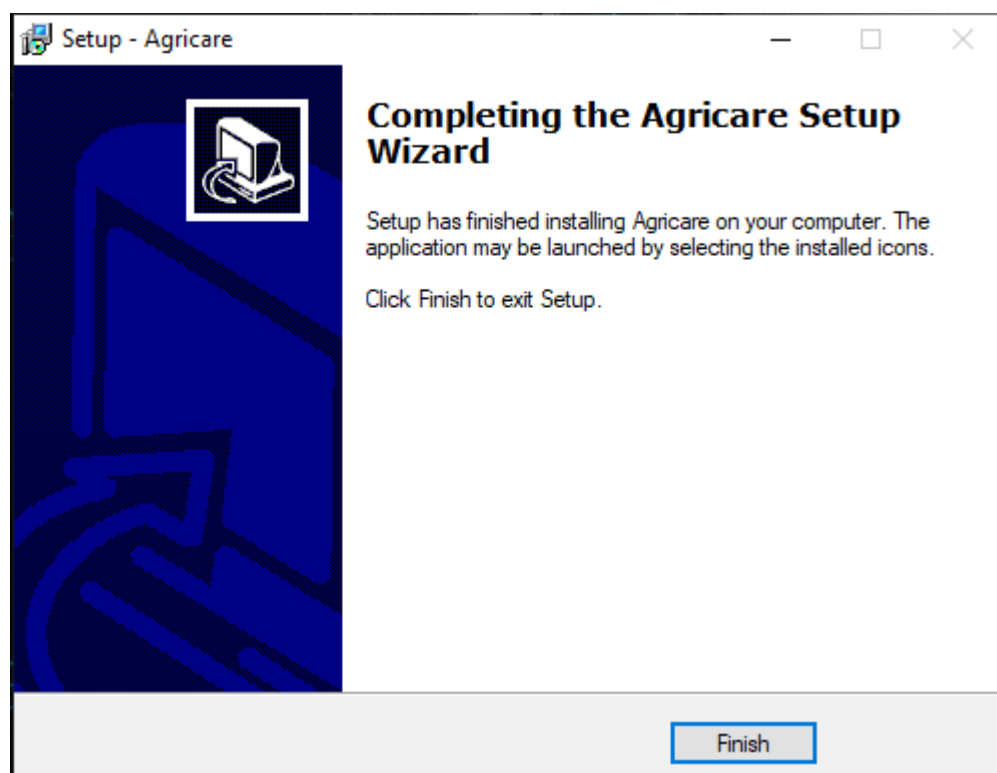
Set the **User** and **Company**

User Registration

User Name

Company

OK



Set the password

Change password

Old password

New password

New password

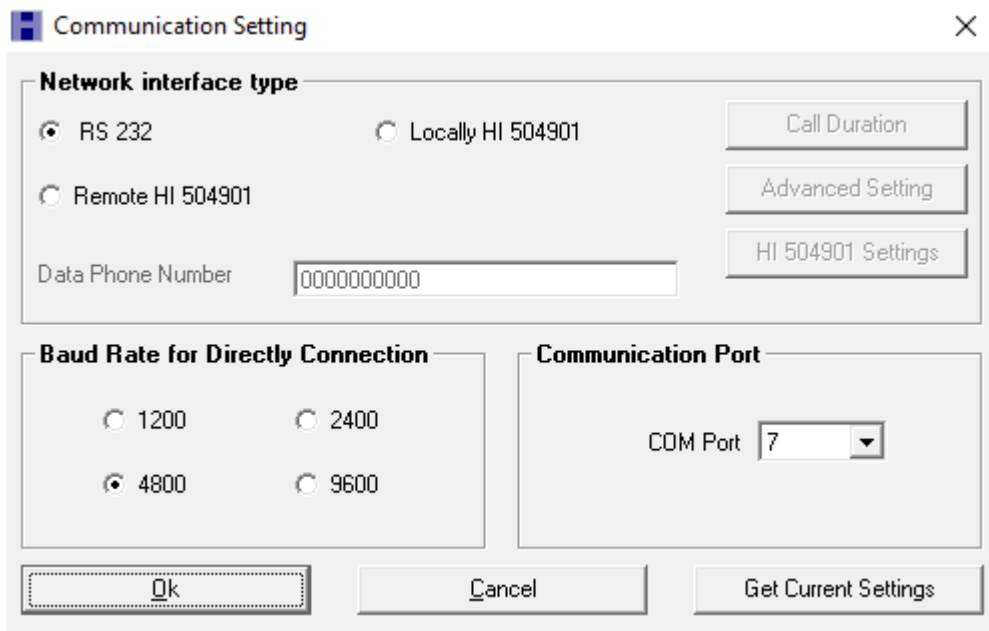
Remember password

Ok Cancel

Old password **0000**

Set the new password

Set the communication port to **4800**



Connect via RS232

